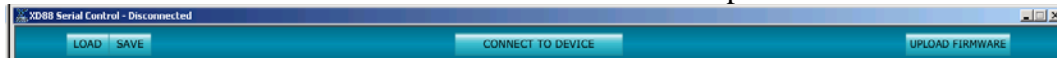


Carvin XD88 Software Installation Guide:

1. Unzip the files to a directory on your Hard Drive.
There is 1 file: "Setup.exe"
2. Run the Setup.exe file to install the XD88 Serial Control software on your computer.
3. The software will be installed to the "c:\Program Files\Carvin XD88" directory. It is recommended to not change the install directory.
4. You will be asked if you would like a Desktop shortcut icon created. It is recommended to do this to allow easy access to the program.
5. You may now run the software by double-clicking the XD88 Serial Control icon on your desktop, however when linking to the XD88 hardware, the device should be connected and powered on before the software is used.

Connecting the XD88 hardware:

1. You must plug in the USB cable to both your computer and the XD88 before you turn on the XD88.
2. Once the XD88 is powered up and initialized, showing the EQ screen, press the Utility Button to enter the Utility Menu. Press the Down Button 2 times to highlight 'SERIAL CONTROL'.
3. Press Utility to enter Serial Control Mode.
4. Run the XD88 Serial Control software on the computer.
5. Click on the "CONNECT TO DEVICE" button at the top middle of the screen.



6. Select the COM port for the device. This will usually be higher than COM1. The actual COM PORT can be found by right clicking on the 'MY COMPUTER' icon and selecting 'Properties'. Select the 'HARDWARE' tab and click on 'Device Manager' button. Finally click the PORTS (COM & LPT) to see which USB Serial Port is assigned.

